

Oldbury Power Station, LC28 Works and Seismic Strengthening



Over 10 years of work at Oldbury



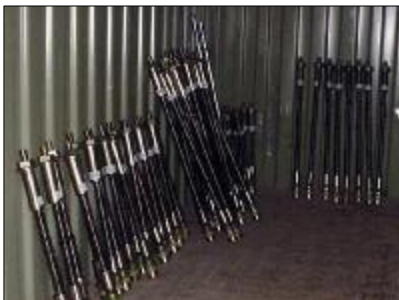
Window strengthening



Plate bonding to soffit



Wall bracket during installation



Liebig bolts

Long term relationships and repeat business demonstrate Balvac's ability to deliver complex repair packages to stringent safety and quality standards within a demanding nuclear power station environment.

Client	BNFL Magnox
Contractor	Balvac
Contract Value	Over £ 2m
Programme	Commenced 2001
Completion	Ongoing

Balvac have undertaken over 40 work packages at Oldbury Power Station under our existing LC28 works arrangement. The projects have ranged from detailed visual and exploratory investigations of structural defects, to the installation of complex steel support systems to meet the requirements of the Static Case Design. Concrete repair works and protective coatings of varying nature have also been undertaken by our skilled workforce.

Balvac have been working at Oldbury Power Station for over ten years and for this contract have now been resident on site since early 2001. In addition to the LC28 works we have also undertaken seismic strengthening works. This involved the installation of 16 unique bracket arrangements, installed between floors of the Control Building in order to tie different structural elements of the building together. Precise installation of long, large diameter, under-reamed Liebig holding down bolts, whilst minimising disruption to the normal operation of the power station, was a feature of this work.

During our time at Oldbury Power Station, we have developed a Quality Plan / Method Statement template which has been accepted and adopted by BNFL Magnox as a standard.

At Oldbury, we have worked very closely with and developed co-ordinated approaches with the project designers, initially DGP and more recently Jacob Babbie. Our ethos at Oldbury throughout has been to deliver economic solutions through teamwork, planning and co-operation with other stakeholders