

Post Tensioning – Jack Lynch Tunnel, Cork



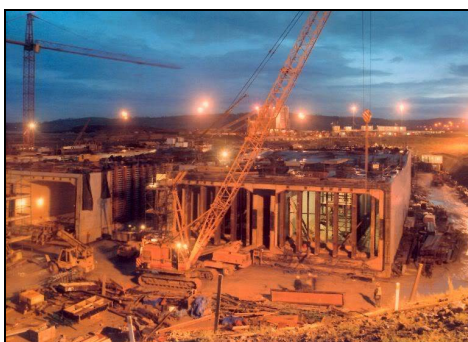
Post tensioning to immersed tube tunnel units used in construction of the N25 road tunnel under the River Lee, Cork.

Client	Cork Corporation
Consultant	Ewbank Preece O'heocha
Main Contractor	Tarmac Walls JV
Post tensioning specialist	Balvac
Subcontract Value	£400k
Site programme	1996-1997



Balvac were contracted by Tarmac Walls in 1996 to post tension 5No 120m long immersed tube units used in the construction of River Lee Tunnel near Cork, now known as the Jack Lynch Tunnel.

Each 24.5m wide x 8.5m high tunnel section was cast in 20m lengths which were then post tensioned together within the dry dock to make up a complete 120m unit. Construction of the units was carried out to a very tight programme working 7 days a week, including nights.



Post tensioning tendons were each of type 19/15, within spirally wound galvanised steel ducts. Tendons were grouted using common grout ie comprising water, cement and additive.

Units were floated out and positioned on the bed of the River Lee by Tarmac Walls in the Spring of 1997.

Balvac were audited on this contract by CARES as part of the process leading to award of their QA certification, which we have held continuously since then. Balvac were only the second Post Tensioning contractor to achieve this status.



Balvac are able to offer internal and external, bonded and unbonded, post tensioning systems for a wide range of structures such as bridges, building slabs, tanks and silos. We also carry out tendon monitoring work at Nuclear Power Stations.

Balvac

Sherwood House, Gadbrook Business Centre, Rudheath,
Northwich, CW9 7TN

Tel: 01606 333036 Fax: 01606 812497

e-mail : enquiries.balvac@balvac.co.uk

www.balvac.co.uk